



Drop-In Stairs™ Tread Designs

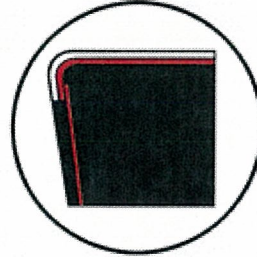
Tuff-Tread™ is made of abrasive filled epoxy for optimum function and value. This factory installed tread eliminates delays waiting for concrete to set and costly cleanup. 3/8" (10 mm) thick; 8,000 psi (55,158 kPa) compressive strength.

Not recommended for use outside.

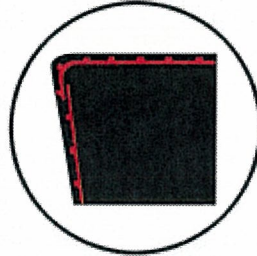


Tuff-Coat™ is an economical slip and wear-resistant abrasive epoxy coating factory-applied directly to flat steel treads.

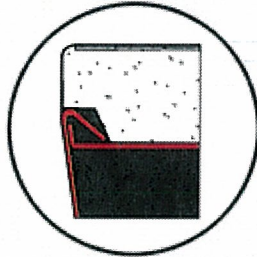
Not recommended for use outside.



Checkered Plate Treads are furnished in required gauges for slip-resistance. Smooth plates are also available ready for field-applied treads by others.



Drop-In™ Precast Treads are an excellent alternative to traditional site-poured treads. 1-1/2" (38 mm) thick; 5000 psi (34,474 kPa) compressive strength. Natural concrete color with broom finish.



Field Poured Concrete Treads are traditional 1-1/2" (38 mm) pan type treads for field-poured concrete by others; 3,300 psi (22,753 kPa) compressive strength.

